

Jesus, Son of God

Words and Music by CHRIS TOMLIN,
MATT MAHER and JASON INGRAM

Capo 4 (G) Passionately ♩ = 76

Keyboard
(Guitar)

B (G)

E/B (C/G)

VERSE 1

4

F# / B (D / G)

E / B (C / G)

B (G)

1. You came down from
crown of thorns to

7

E / B (C / G)

F# / B (D / G)

Heav - en's throne. This earth You formed was
mock Your name. _ For - give - ness fell ___ up -

9

E / B (C / G)

G#m7 (Em7)

not Your home. _ A love like this, _ the
on Your face. _ A love like this, _ the

11

E / B (C / G)

B (G)

1.

world had nev - er known. _ A
world had nev - er known. _

CHORUS

14

2.

On the al - tar of our praise, let there

16 E (C) B/D# (G/B)

be no high - er name: Je - sus, Son ____ of God. ____

18 F#sus (Dsus) G#m7 (Em7)

____ You laid down Your per - fect life; You

20 F#/A# (D/F#) B (G) E (C) B/D# (G/B)

are the sac - ri - fice, Je - sus, Son ____ of God. ____

22 F#sus (Dsus) E (C) B/D# (G/B) F#sus (Dsus)

____ You are Je - sus, Son ____ of God. ____ 2. You

VERSE 2

25 B (G) E/B (C/G)

took our sin, ____ You bore our shame, _ You

27 F#/B (D/G) E/B (C/G)

rose to life, ____ You de - feat - ed ____ the grave. A

29 G#m7 (Em7) E/B (C/G) B (G)

love like this _ the world has nev - er known. ____

32

'Cause You took our sin, ____ You

34 $C\sharp m7$ (Am7) $B/D\sharp$ (G/B)

bore our shame, — You rose to life, — You de -

36 E (C) $B/F\sharp$ (G/D)

feat - ed — the grave! A love like this — the

38 $E/G\sharp$ (C/E) $B/D\sharp$ (G/B) E (C) $F\sharp sus$ (Dsus)

world has nev - er known. — On the

CHORUS

41 B (G)

al - tar of our praise, let there be no high - er name:

43 E (C) $B/D\sharp$ (G/B) $F\sharp sus$ (Dsus) $G\sharp m7$ (Em7)

Je - sus, Son — of God. — You laid down Your per - fect life; You

46 $F\sharp/A\sharp$ (D/F#) B (G) E (C) $B/D\sharp$ (G/B)

are the sac - ri - fice, Je - sus, Son — of God. —

48 $F\sharp sus$ (Dsus) E (C) $B/D\sharp$ (G/B)

— You are Je - sus, Son — of God. —

BRIDGE

50 $F\sharp sus$ (Dsus) E (C) B (G) $F\sharp sus$ (Dsus)

— Be lift - ed high - er than all You've o - ver - come. Your name be

53 E (C) B (G) F#sus (Dsus) E/G# (C/E)

loud - er than an - y oth - er song. There is no pow - er that can

56 B/D# (G/B) F#sus (Dsus) E (C) B/D# (G/B) G#m7 (Em7) F#sus (Dsus)

come a - gainst Your love— the cross was e - nough, the cross was e - nough, the

59 E (C) B/D# (G/B) G#m7 (Em7) F#sus (Dsus)

cross was e - nough, the cross was e - nough!

CHORUS

62 E (C) B (G)

On the al - tar of our praise, let there

65 F#/B (D/G) B (G) E (C) B/D# (G/B) F#sus (Dsus)

be no high - er name: Je - sus, Son ___ of God. ___ You laid

68 G#m7 (Em7) F#/A# (D/F#) B (G) E (C) B/D# (G/B)

down Your per - fect life; You are the sac - ri - fice, Je - sus, Son ___ of God. _

71 1. F#sus (Dsus) 2. F#sus (Dsus) E (C) B/D# (G/B)

___ On the ___ You are Je - sus, Son ___ of God.

BRIDGE

74 F#sus (Dsus) E (C) B (G) F#sus (Dsus)

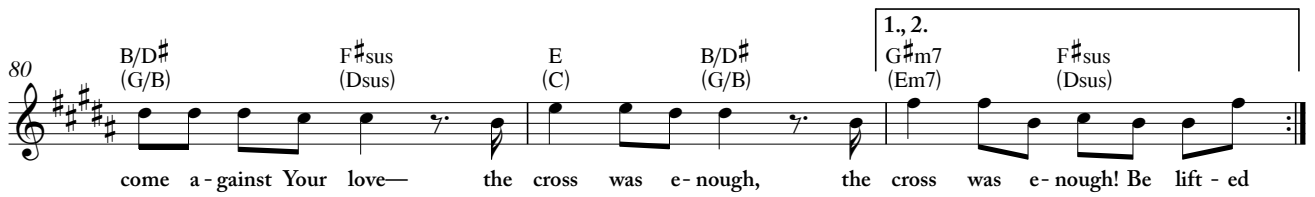
___ Be lift - ed high - er than all You've o - ver - come. Your name be

77 E
(C) B
(G) F#sus
(Dsus) E/G#
(C/E)



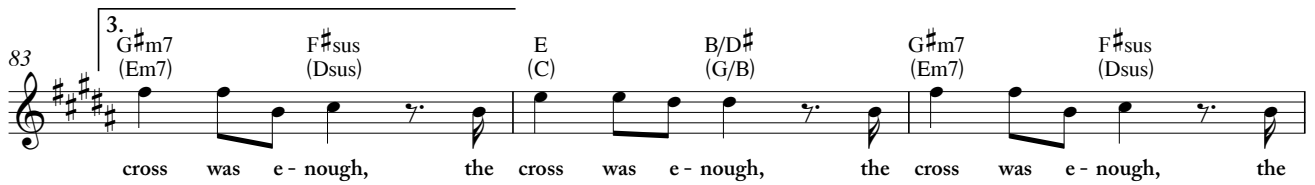
loud - er than an - y oth - er song. There is no pow - er that can

80 B/D#
(G/B) F#sus
(Dsus) E
(C) B/D#
(G/B) 1., 2.
G#m7
(Em7) F#sus
(Dsus)



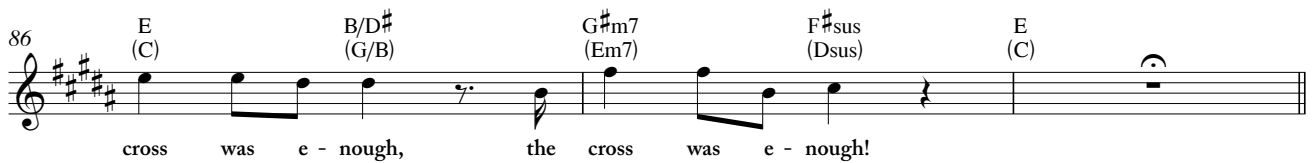
come a - gainst Your love— the cross was e - nough, the cross was e - nough! Be lift - ed

83 3.
G#m7
(Em7) F#sus
(Dsus) E
(C) B/D#
(G/B) G#m7
(Em7) F#sus
(Dsus)



cross was e - nough, the cross was e - nough, the cross was e - nough, the

86 E
(C) B/D#
(G/B) G#m7
(Em7) F#sus
(Dsus) E
(C)



cross was e - nough, the cross was e - nough!

89 B
(G)



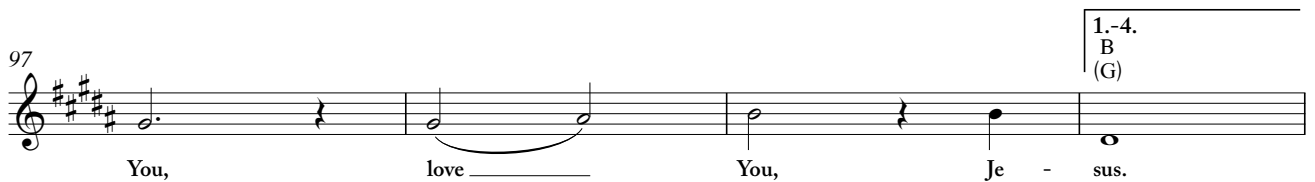
rubato

93 E
(C)



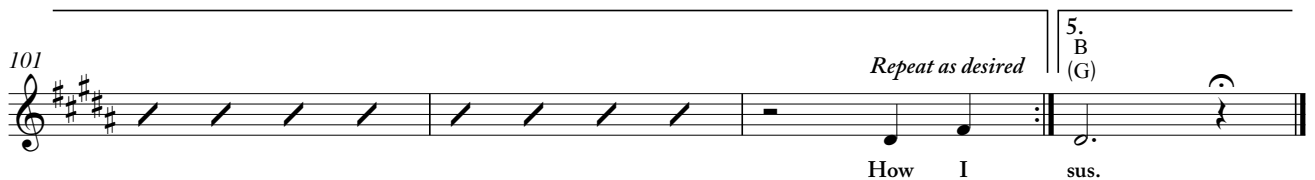
How I love

97 1.-4.
B
(G)



You, love You, Je - sus.

101 Repeat as desired 5.
B
(G)



How I sus.

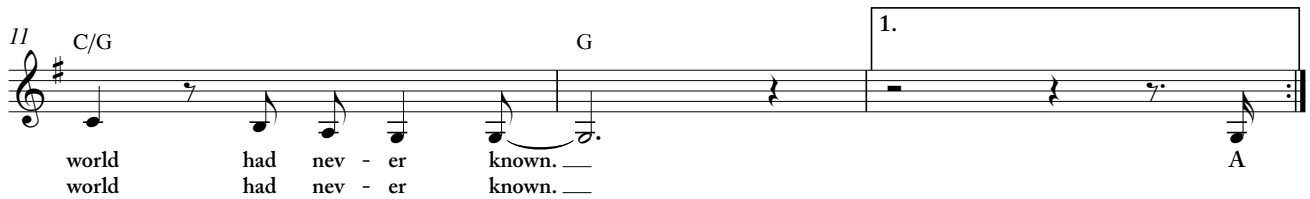
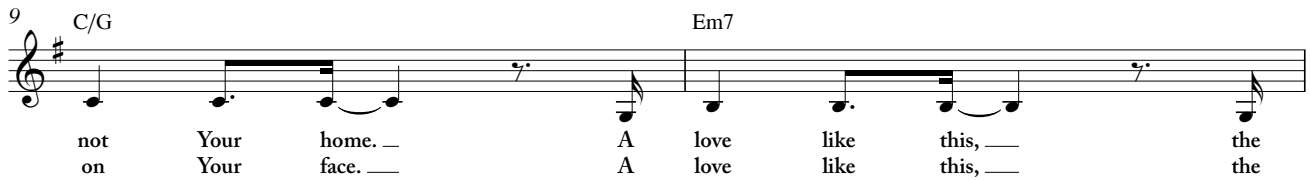
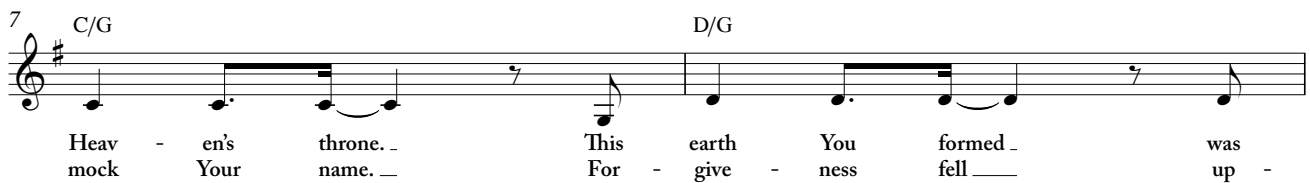
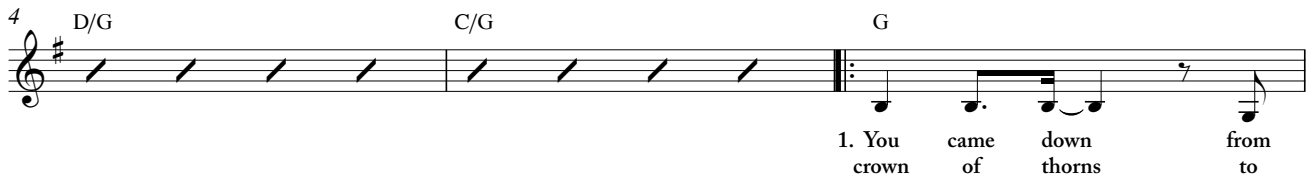
Jesus, Son of God

Words and Music by CHRIS TOMLIN,
MATT MAHER and JASON INGRAM

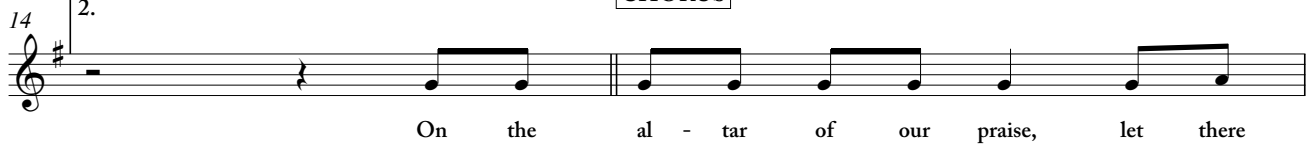
Passionately ♩ = 76



VERSE 1



CHORUS



16 C G/B
be no high - er name: Je - sus, Son of God.

18 Dsus Em7
You laid down Your per - fect life; You

20 D/F# G C G/B
are the sac - ri - fice, Je - sus, Son of God.

22 Dsus C G/B Dsus
You are Je - sus, Son of God. 2. You

VERSE 2

25 G C/G
took our sin, You bore our shame, You

27 D/G C/G
rose to life, You de - feat - ed the grave. A

29 Em7 C/G G
love like this the world has nev - er known.

32
'Cause You took our sin, You

34 Am7 G/B

bore our shame, - You rose to life, - You de -

36 C G/D

feat - ed the grave! A love like this the

38 C/E G/B C Dsus

world has nev - er known. On the

CHORUS

41 G

al - tar of our praise, let there be no high - er name:

43 C G/B Dsus Em7

Je - sus, Son of God. You laid down Your per - fect life; You

46 D/F# G C G/B

are the sac - ri - fice, Je - sus, Son of God. -

48 Dsus C G/B

- You are Je - sus, Son of God. -

BRIDGE

50 Dsus C G Dsus

- Be lift - ed high - er than all You've o - ver - come. Your name be

53 C G Dsus C/E
 loud - er than an - y oth - er song. There is no pow - er that can

56 G/B Dsus C G/B Em7 Dsus
 come a - gainst Your love— the cross was e - nough, the cross was e - nough, the

59 C G/B Em7 Dsus
 cross was e - nough, the cross was e - nough!

CHORUS

62 C G
 On the al - tar of our praise, let there

65 D/G G C G/B Dsus
 be no high - er name: Je - sus, Son ___ of God. ___ You laid

68 Em7 D/F# G C G/B
 down Your per - fect life; You are the sac - ri - fice, Je - sus, Son ___ of God. _

71 1. 2.
 Dsus Dsus C G/B
 ___ On the ___ You are Je - sus, Son ___ of God.

BRIDGE

74 Dsus C G Dsus
 ___ Be lift - ed high - er than all You've o - ver - come. Your name be

77 C G Dsus C/E
loud - er than an - y oth - er song. There is no pow - er that can

80 G/B Dsus C G/B Em7 Dsus
come a - gainst Your love— the cross was e - nough, the cross was e - nough! Be lift - ed

83 3. Em7 Dsus C G/B Em7 Dsus
cross was e - nough, the cross was e - nough, the cross was e - nough, the

86 C G/B Em7 Dsus C
cross was e - nough, the cross was e - nough!

89 G
rubato

93 C
How I love

97 1.-4. G
You, love — You, Je - sus.

101 Repeat as desired 5. G
How I sus.