

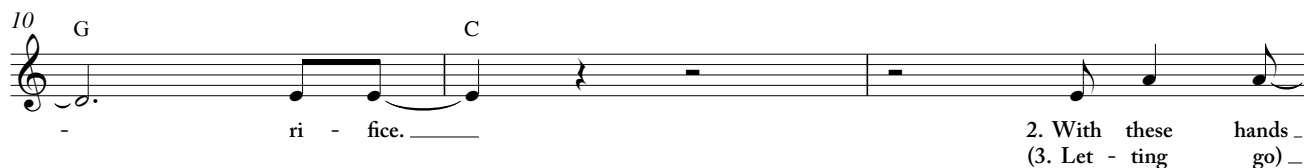
# Lay Me Down

Words and Music by CHRIS TOMLIN,  
MATT REDMAN, JONAS MYRIN,  
and JASON INGRAM

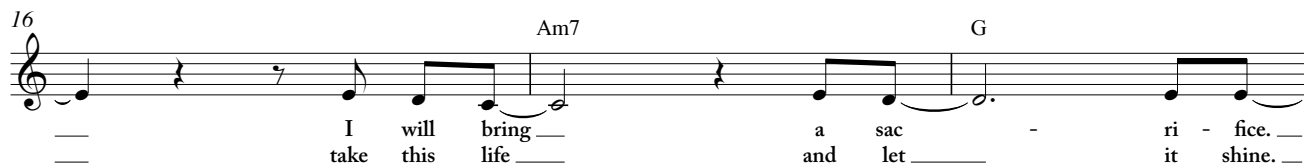
4 on the floor ♩ = 130



## VERSE 1



## VERSE 2, 3



19 C Am7

I will bring a sac -  
Take this life and let

22 G F2 C

ri - fice.  
it shine.

25 **CHORUS** F2 C G

I lay me down, I'm not my own, I be -

28 Am7 G F2 C

long to You a - lone. Lay me down, lay me

31 G F2

down. Oh! Hand on my

34 C G Am7 G

heart, this much is true: There's no life a - part from

37 F2 C G *3rd time to Coda*

You. Lay me down, lay me down.

40 1. Am7 G/B

1. Am7 G/B

43 C

3. Let - ting go Oh! \_\_\_\_\_

46 F2 C G

Lay me down, lay me down.

49 C2

Lay me down.

**BRIDGE**

52

It will be my joy to say, \_\_\_\_\_

55

\_\_\_\_\_ "Your \_\_\_\_\_ will! Your \_\_\_\_\_ way!" It will be my

58 Am7

joy to say, \_\_\_\_\_ "Your \_\_\_\_\_ will! Your \_\_\_\_\_

61 Gsus

\_\_\_\_\_ way!" It will be my joy to say, \_\_\_\_\_ "Your \_\_\_\_\_

64 F2 C2

\_\_\_\_\_ will! Your \_\_\_\_\_ way!" al - ways! \_\_\_\_\_

67  
It will be my

70  
joy to say, \_\_\_\_\_ "Your \_\_\_\_\_ will! Your \_\_\_\_\_

73  
\_\_\_\_\_ way!" It will be my joy to say, \_\_\_\_\_ "Your \_\_\_\_\_

76  
\_\_\_\_\_ will! Your \_\_\_\_\_ way!" It will be my joy to say, \_\_\_\_\_

79  
\_\_\_\_\_ "Your \_\_\_\_\_ will! Your \_\_\_\_\_ way!" al -

82  
- ways! \_\_\_\_\_ *D.S. al Coda*

♩ CODA

86  
I lay me down, I'm not \_\_\_\_\_ my \_\_\_\_\_

89  
own, I be - long to You a - lone. Lay me

92 C G  
down, lay me down. Oh!

95 F2 C G  
Hand on my heart, this much is true: There's no

98 Am7 G F2 C  
life a - part from You. Lay me down, lay me

101 G F2  
down. Oh! Lay me

104 C G  
down, lay me down.

107 Am7 G/B C

110 Am7 G/B

113 C

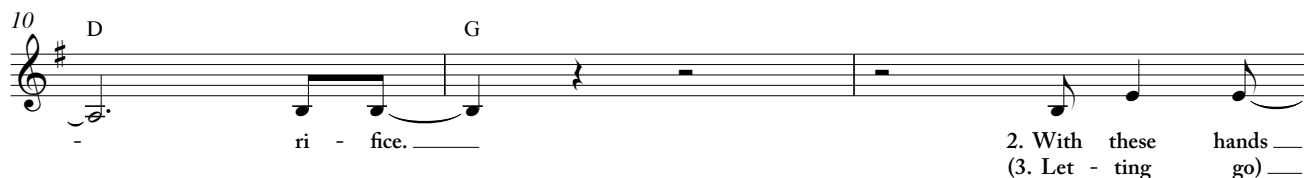
# Lay Me Down

Words and Music by CHRIS TOMLIN,  
MATT REDMAN, JONAS MYRIN,  
and JASON INGRAM

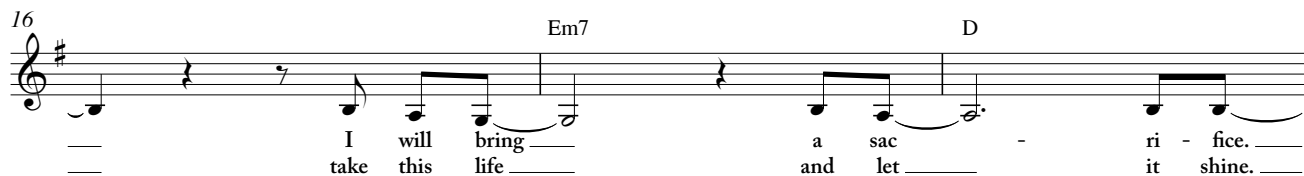
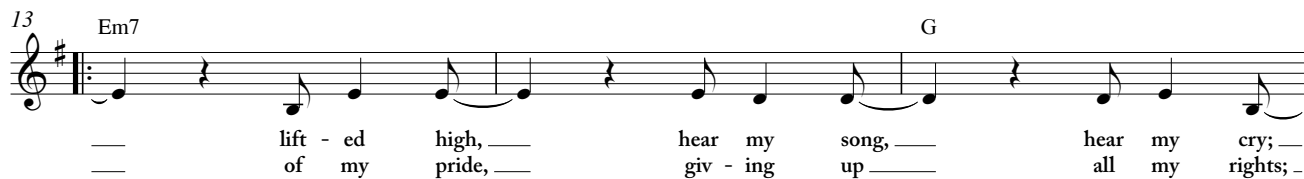
4 on the floor ♩ = 130



## VERSE 1



## VERSE 2, 3



19 G Em7

I will bring a sac -  
Take this life and let

22 D C2 G

ri - fice.  
it shine.

25 **CHORUS** C2 G D

I lay me down, I'm not my own, I be -

28 Em7 D C2 G

long to You a - lone. Lay me down, lay me

31 D C2

down. Oh! Hand on my

34 G D Em7 D

heart, this much is true: There's no life a - part from

37 C2 G D *3rd time to Coda*

You. Lay me down, lay me down.

40 1. Em7 D/F#

43 G

3. Let - ting go Oh! \_\_\_\_\_

46 C2 G D

Lay me down, lay me down.

49 G2

Lay me down.

**BRIDGE**

52

It will be my joy to say, —

55

— “Your — will! Your — way!” It will be my

58 Em7

joy to say, — “Your — will! Your —

61 Dsus

— way!” It will be my joy to say, — “Your —

64 C2 G2

— will! Your — way!” al - ways! \_\_\_\_\_



67

It will be my

Detailed description: Musical staff in treble clef with a key signature of one sharp (F#). Measure 67 contains a whole note G4, a quarter rest, a quarter rest, and a quarter note G4. The lyrics "It will be my" are positioned below the staff.

70

joy to say, "Your will! Your

Detailed description: Musical staff in treble clef with a key signature of one sharp (F#). Measure 70 contains a quarter note G4, a quarter note A4, a quarter note B4, a quarter note C5, a quarter rest, a quarter note G4, a quarter note A4, a quarter note B4, a quarter note C5, a quarter rest, a quarter note G4, a quarter note A4, a quarter note B4, a quarter note C5, a quarter rest, a quarter note G4, a quarter note A4, a quarter note B4, a quarter note C5. The lyrics "joy to say, 'Your will! Your" are positioned below the staff.

73

way!" It will be my joy to say, "Your

Detailed description: Musical staff in treble clef with a key signature of one sharp (F#). Measure 73 contains a quarter note G4, a quarter note A4, a quarter note B4, a quarter note C5, a quarter note G4, a quarter note A4, a quarter note B4, a quarter note C5, a quarter note G4, a quarter note A4, a quarter note B4, a quarter note C5, a quarter note G4, a quarter note A4, a quarter note B4, a quarter note C5, a quarter note G4, a quarter note A4, a quarter note B4, a quarter note C5. The lyrics "way!' It will be my joy to say, 'Your" are positioned below the staff. An "Em7" chord symbol is placed above the staff.

76

will! Your way!" It will be my joy to say,

Detailed description: Musical staff in treble clef with a key signature of one sharp (F#). Measure 76 contains a quarter note G4, a quarter note A4, a quarter note B4, a quarter note C5, a quarter note G4, a quarter note A4, a quarter note B4, a quarter note C5, a quarter note G4, a quarter note A4, a quarter note B4, a quarter note C5, a quarter note G4, a quarter note A4, a quarter note B4, a quarter note C5, a quarter note G4, a quarter note A4, a quarter note B4, a quarter note C5. The lyrics "will! Your way!' It will be my joy to say," are positioned below the staff. A "Dsus" chord symbol is placed above the staff.

79

"Your will! Your way!" al -

Detailed description: Musical staff in treble clef with a key signature of one sharp (F#). Measure 79 contains a quarter note G4, a quarter note A4, a quarter note B4, a quarter note C5, a quarter note G4, a quarter note A4, a quarter note B4, a quarter note C5, a quarter note G4, a quarter note A4, a quarter note B4, a quarter note C5, a quarter note G4, a quarter note A4, a quarter note B4, a quarter note C5, a quarter note G4, a quarter note A4, a quarter note B4, a quarter note C5. The lyrics "'Your will! Your way!' al -" are positioned below the staff. A "C2" chord symbol is placed above the staff.

82

ways! \_\_\_\_\_

Detailed description: Musical staff in treble clef with a key signature of one sharp (F#). Measure 82 contains a quarter note G4, a quarter note A4, a quarter note B4, a quarter note C5, a quarter note G4, a quarter note A4, a quarter note B4, a quarter note C5, a quarter note G4, a quarter note A4, a quarter note B4, a quarter note C5, a quarter note G4, a quarter note A4, a quarter note B4, a quarter note C5, a quarter note G4, a quarter note A4, a quarter note B4, a quarter note C5. The lyrics "ways! \_\_\_\_\_" are positioned below the staff. Chord symbols "G2" and "Dsus" are placed above the staff. The instruction "D.S. al Coda" is written at the end of the staff.

⊕ CODA

86

I lay me down, I'm not my

Detailed description: Musical staff in treble clef with a key signature of one sharp (F#). Measure 86 contains a quarter note G4, a quarter note A4, a quarter note B4, a quarter note C5, a quarter note G4, a quarter note A4, a quarter note B4, a quarter note C5, a quarter note G4, a quarter note A4, a quarter note B4, a quarter note C5, a quarter note G4, a quarter note A4, a quarter note B4, a quarter note C5, a quarter note G4, a quarter note A4, a quarter note B4, a quarter note C5. The lyrics "I lay me down, I'm not my" are positioned below the staff. Chord symbols "C2" and "G" are placed above the staff.

89

own, I be - long to You a - lone. Lay me

Detailed description: Musical staff in treble clef with a key signature of one sharp (F#). Measure 89 contains a quarter note G4, a quarter note A4, a quarter note B4, a quarter note C5, a quarter note G4, a quarter note A4, a quarter note B4, a quarter note C5, a quarter note G4, a quarter note A4, a quarter note B4, a quarter note C5, a quarter note G4, a quarter note A4, a quarter note B4, a quarter note C5, a quarter note G4, a quarter note A4, a quarter note B4, a quarter note C5. The lyrics "own, I be - long to You a - lone. Lay me" are positioned below the staff. Chord symbols "D", "Em7", "D", and "C2" are placed above the staff.

92 G D  
down, lay me down. Oh!

95 C2 G D  
Hand on my heart, this much is true: There's no

98 Em7 D C2 G  
life a - part from You. Lay me down, lay me

101 D C2  
down. Oh! Lay me

104 G D  
down, lay me down.

107 Em7 D/F# G

110 Em7 D/F#

113 G